

**JOINT LUZ & TEU COMMITTEE WORKSHOP
AGENDA**

Monday, May 21, 2018
2:00 PM
Council Chambers 1st Floor, City Hall

Lori Boyer, Chair (Joint LUZ & TEU)

Al Ferraro, Chair (TEU)

Jim Love
Aaron Bowman
John Crescimbeni
Tommy Hazouri
Joyce Morgan

Matt Schellenberg, Chair (LUZ)

Danny Becton
Katrina Brown
Doyle Carter
Reggie Gaffney

Tape No. _____

Carol Owens, Chief of Legislative Services
Legislative Asst.: Adri Maguire Segui
Legislative Supervisor: Jessica Matthews
Research Asst: John Jackson/Yvonne Mitchell
Council Auditors Office: Philip Peterson
Administration: Jordan Elsbury
Planning Dept.: Folks Huxford
Planning Dept: Kristen Reed
Planning Dept: Bruce Lewis
Planning Dept: Laurie Santana

Meeting Convened:

Meeting Adjourned:

If a person decides to appeal any decision made by the Council with respect to any matter considered at such meeting, such person will need a record of the proceedings, and for such purpose, such person may need to ensure that a verbatim record of the proceedings is made, which record includes the testimony and evidence upon which the appeal is to be based.

RULE 4.505 DISRUPTION OF MEETING No member of the audience shall applaud nor make any noise or remarks that are audible to the Committee that would indicate approval or disapproval of anything being discussed. Any disregard of this rule may result in removal by the Sergeant at Arms.

REQUEST TO SPEAK:

1. Fill out a speaker card.
2. Sign it if you are going to speak.
3. Read the rules on the back of the card.
4. Place card in tray.



PARKING: If you park in the Library Garage (Entry on Duval St, W of Main St), please see the Legislative Assistant for ticket validation.

Point of Discussion:

1) Introductions

2) ROW permit standards-unresolved issues

A. New Pole-Above grade enclosure at pole base

B. Ground mounted equipment location in Rural Development Area where no Sidewalk or M/U Trail currently Exists or is Planned

- i. Located in Foliage?
- ii. Located within 10' of Pole?
- iii. Located Immediately Adjacent to Pole?

3) Private Property Standards

- i. Track I
- ii. Track II

4) Public Comments

5) Next meeting June 11, 2018

NOTE: Other items may be added at the discretion of the Chair.









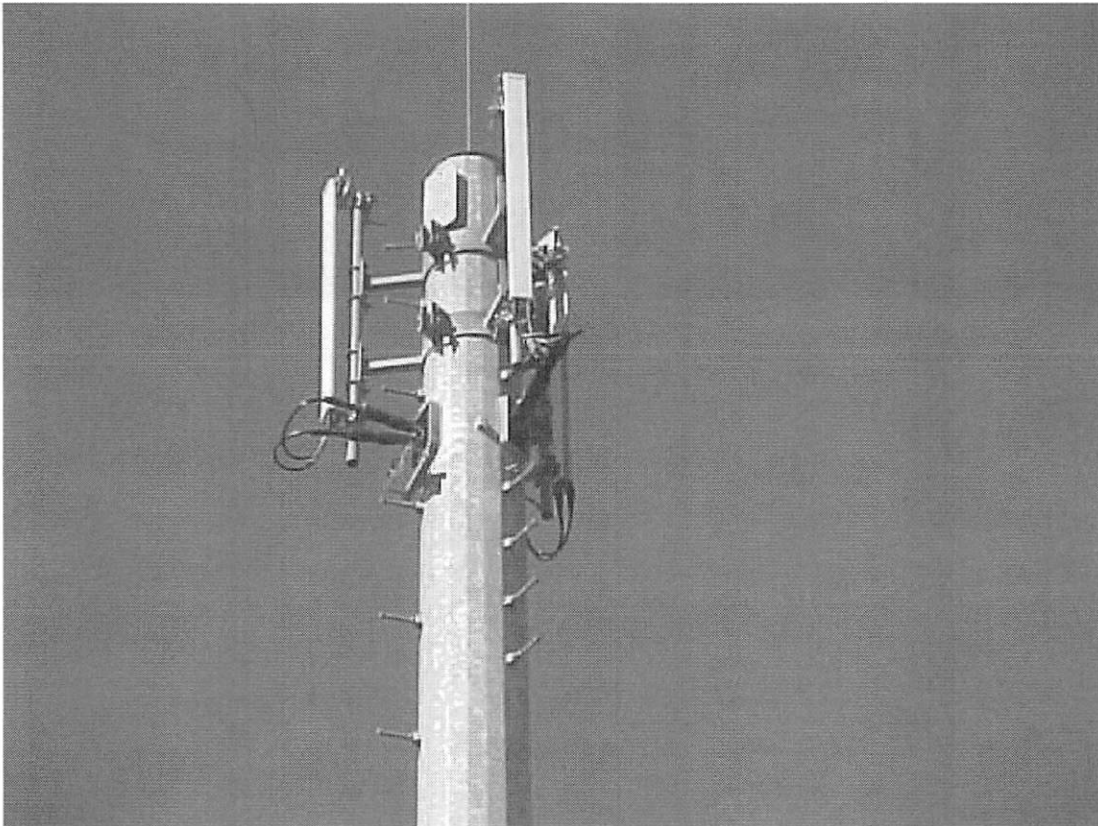






Examples of
Camouflaged Towers,
Low impact/Stealth Towers, Lattice Towers and
Antenna Mounts

March 2011

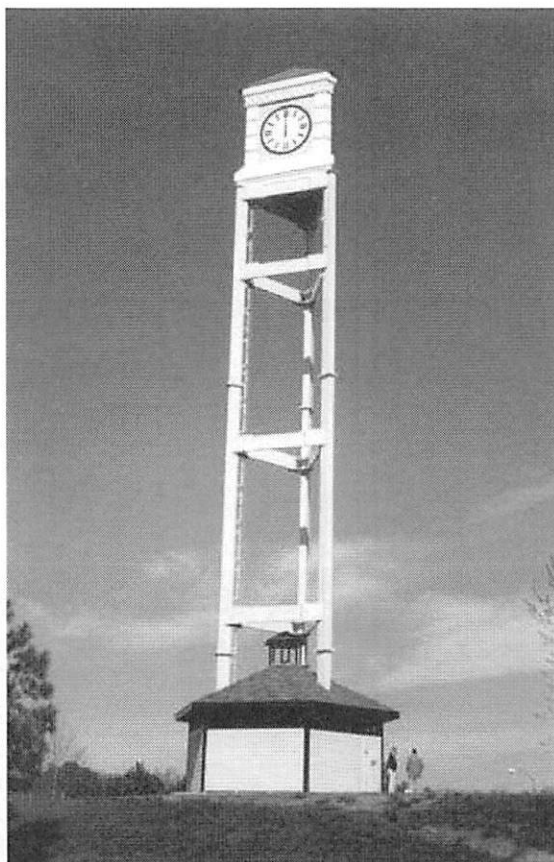
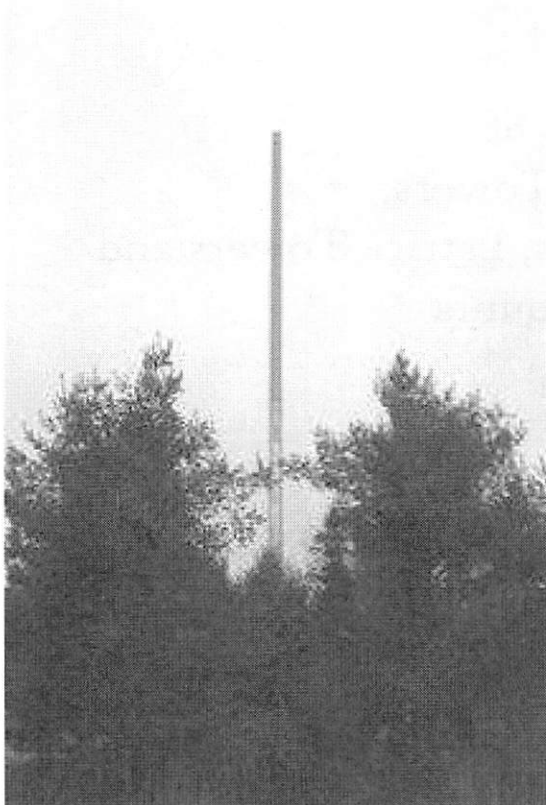


PLANNING AND DEVELOPMENT DEPARTMENT

214 North Hogan Street, Suite 300 | Jacksonville, Florida 32202 | Phone: 904 255.7800 | Fax: 904 255.7884 | www.coj.net

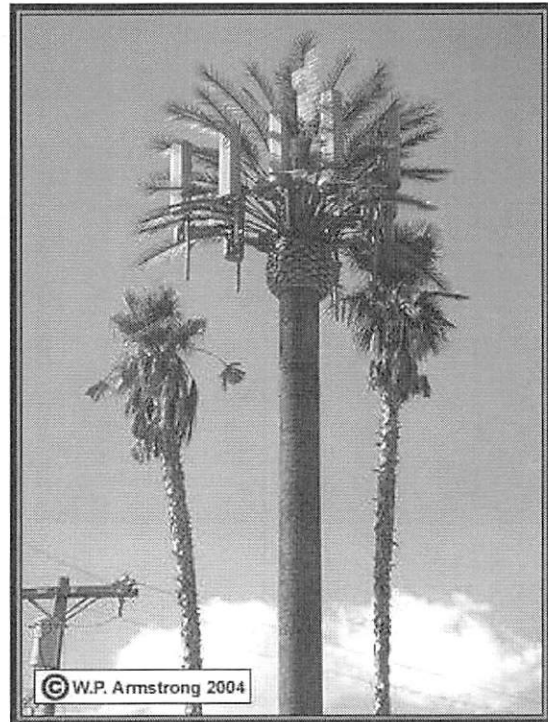
Examples of Camouflaged Towers, Low impact/Stealth Towers, Lattice Towers and Antenna Mounts

Camouflaged Tower examples (Track I)



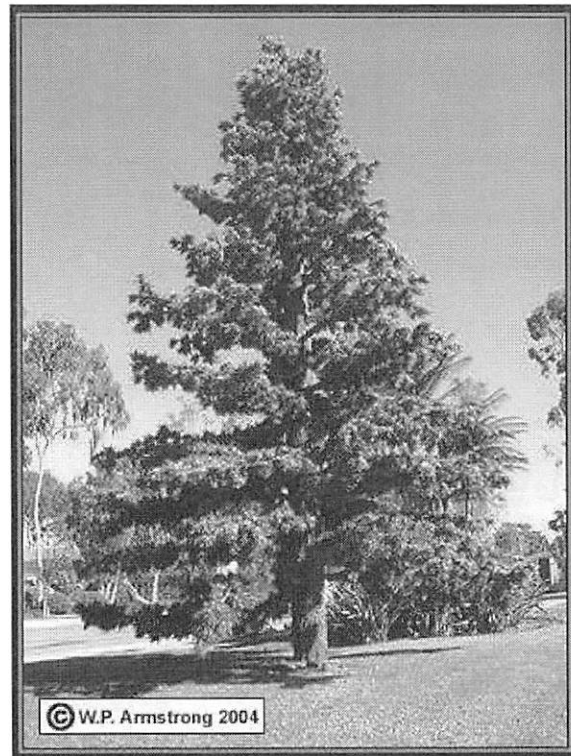
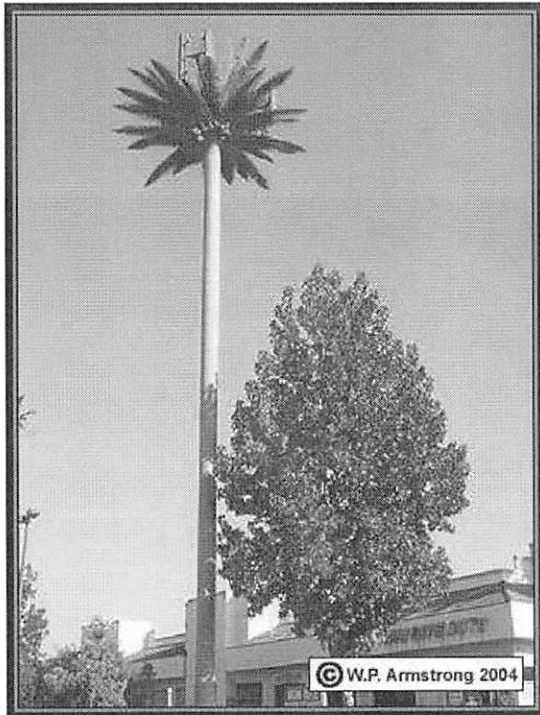
Examples of Camouflaged Towers, Low impact/Stealth Towers, Lattice Towers and Antenna Mounts

Camouflaged Tower examples (Track I)



Examples of Camouflaged Towers, Low impact/Stealth Towers, Lattice Towers and Antenna Mounts

Camouflaged Tower examples (Track I)



Examples of Camouflaged Towers, Low impact/Stealth Towers, Lattice Towers and Antenna Mounts

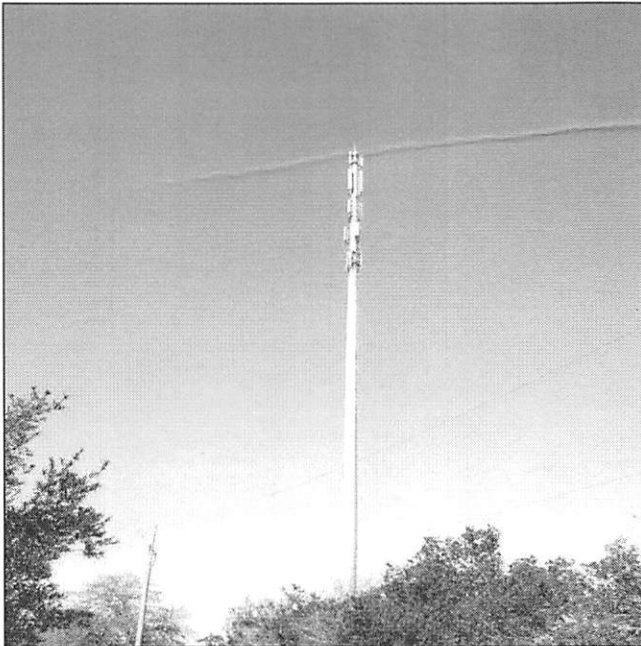
Camouflaged Tower examples (Track I)



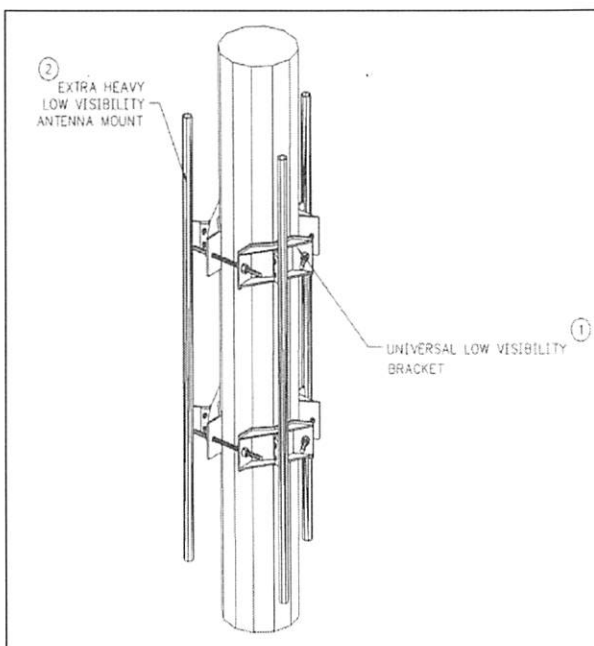
Examples of Camouflaged Towers, Low impact/Stealth Towers, Lattice Towers and Antenna Mounts

Low Impact / Stealth Tower examples (Track II)

As per Ordinance 2001-600-E, a *tapered monopole* is the only acceptable stealth / low profile tower design. Low impact antenna mounts may not extend more than 24 inches from the face of the tower.



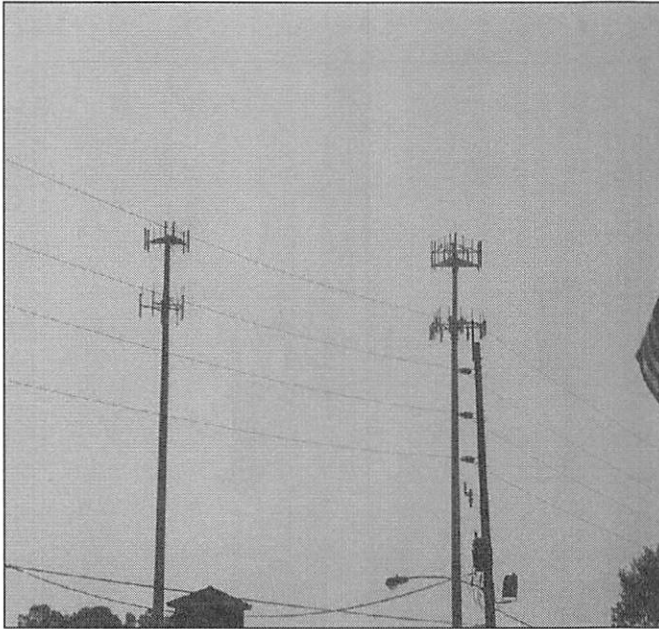
Tapered monopole with flush mounted antenna, stacked



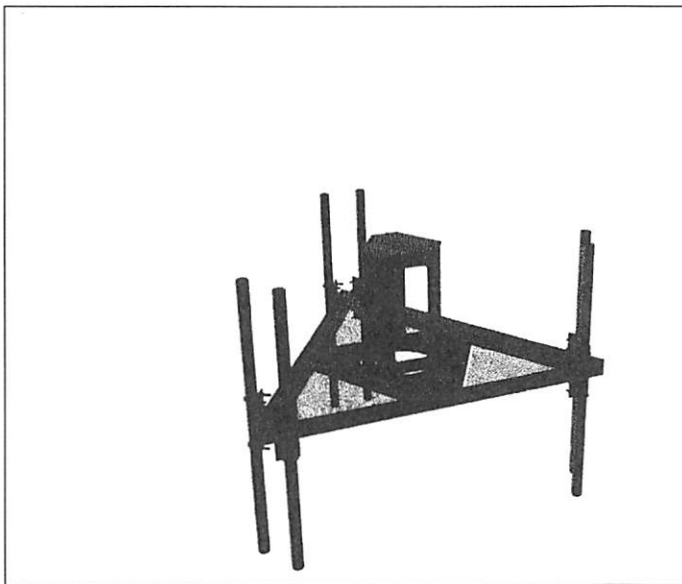
Examples of Camouflaged Towers, Low impact/Stealth Towers, Lattice Towers and Antenna Mounts

Low Impact / Stealth Tower examples (Track II)

As per Ordinance 2001-600-E, a *tapered monopole* is the only acceptable stealth / low profile tower design. Low impact antenna mounts may not extend more than 24 inches from the face of the tower.



Tapered monopole.

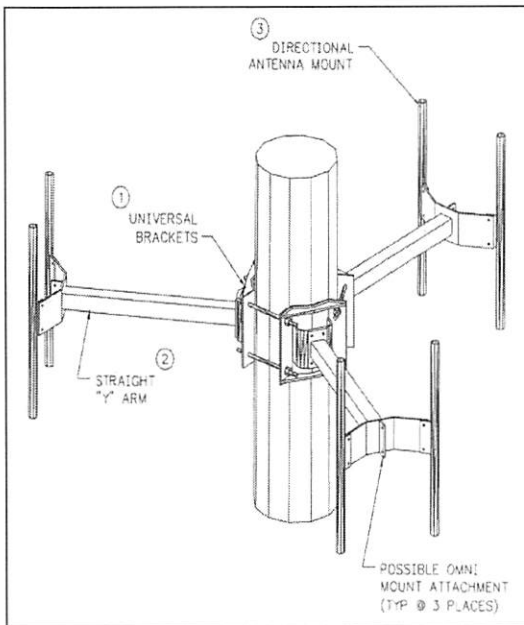


Top mount only platform, 6 antennas

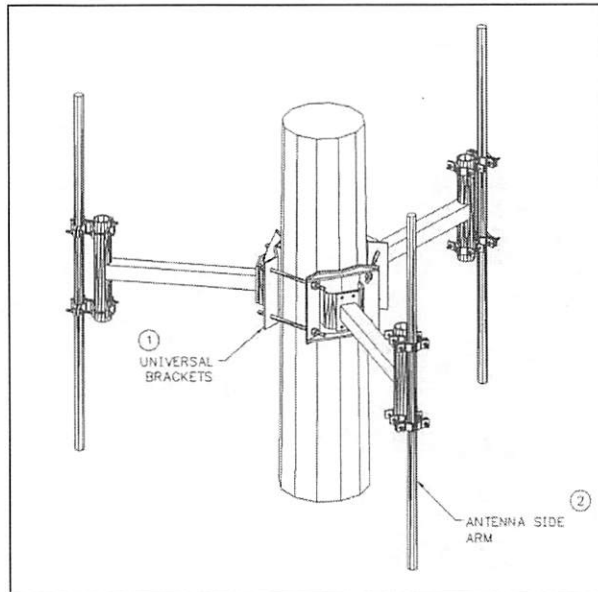
Examples of Camouflaged Towers, Low impact/Stealth Towers, Lattice Towers and Antenna Mounts

Low Impact / Stealth Tower examples (Track II)

As per Ordinance 2001-600-E, a *tapered monopole* is the only acceptable stealth / low profile tower design. Low impact antenna mounts may not extend more than 24 inches from the face of the tower.



Y-arm side bracket

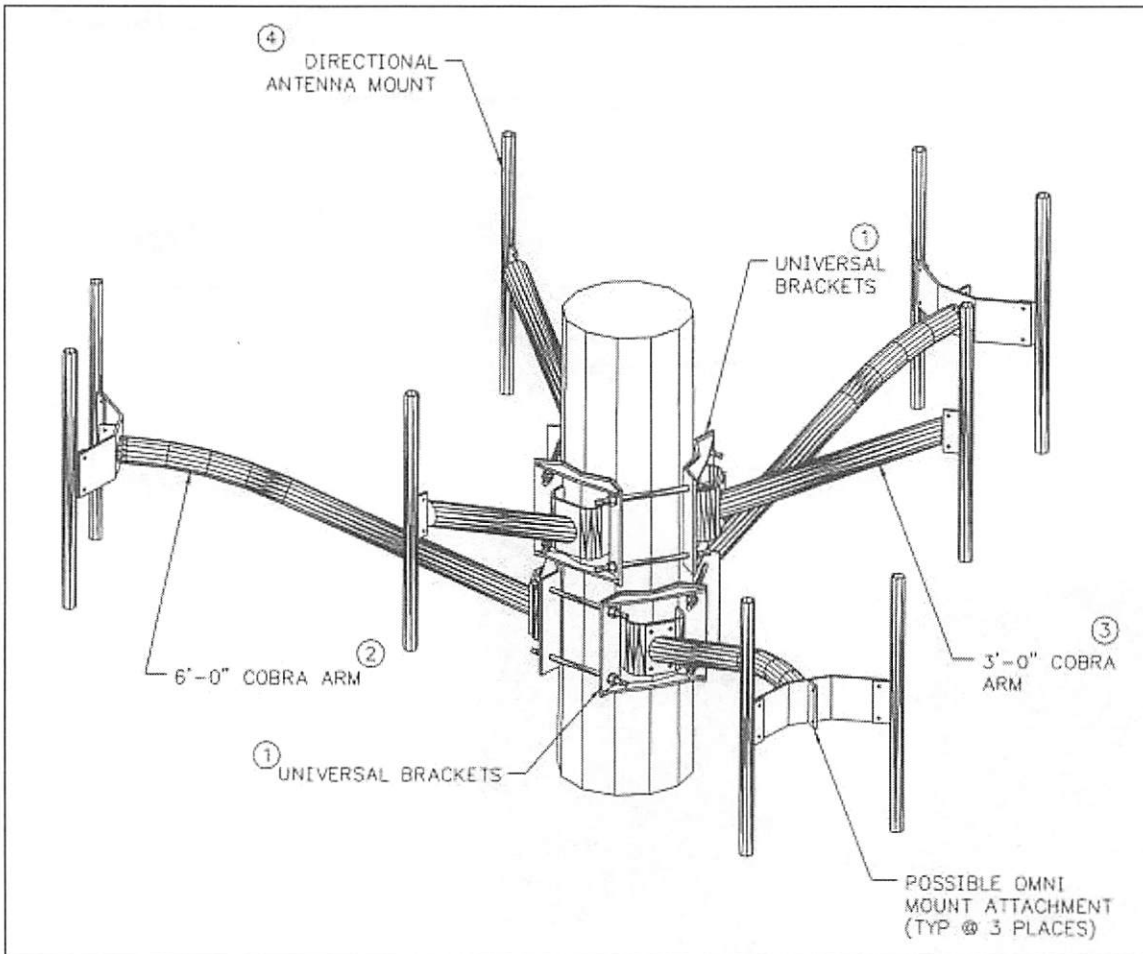


Universal side-arm antenna mounts

Examples of Camouflaged Towers, Low impact/Stealth Towers, Lattice Towers and Antenna Mounts

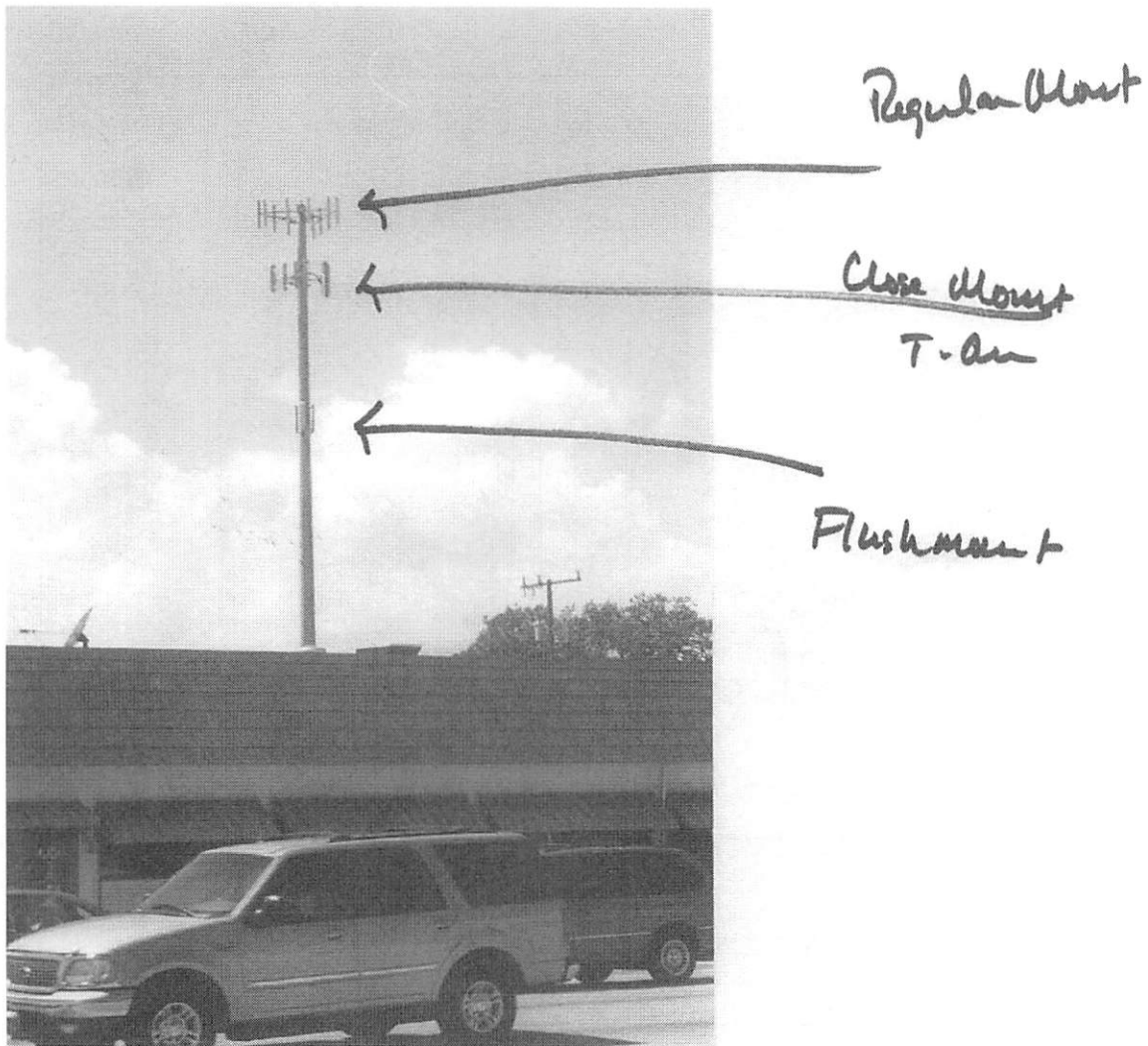
Low Impact / Stealth Tower examples (Track II)

As per Ordinance 2001-600-E, a *tapered monopole* is the only acceptable stealth / low profile tower design. Low impact antenna mounts may not extend more than 24 inches from the face of the tower.



Cobra mounts, six-foot arm / Cobra mounts, three-foot arm

Examples of Camouflaged Towers, Low impact/Stealth Towers, Lattice Towers and Antenna Mounts

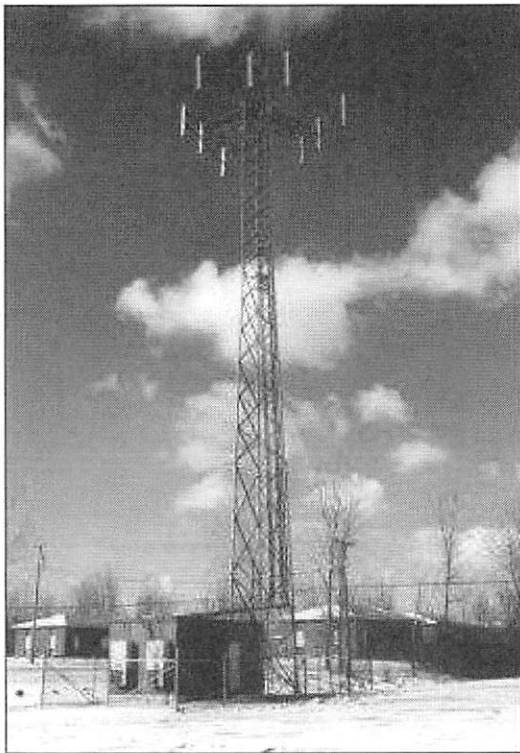


Examples of Camouflaged Towers, Low impact/Stealth Towers, Lattice Towers and Antenna Mounts

Conventional Tower examples (Track III)

Monopole only.

The tower types pictured below are not permitted.





Planning and Development Department

Ed Ball Building
214 North Hogan Street, Suite 300
Jacksonville, FL 32202

MEMORANDUM

TO: Bill Killingsworth, Director
Folks Huxford, Chief

FROM: Bruce Lewis, City Planner Supervisor

RE: Small Cell Antennas

DATE: May 3, 2018

Small cell antenna, shrouding and equipment

- Are they subject to Part 15 Communication Tower and Antenna Regulations of the Zoning Code?
- Are they subject to the height limitations of the underlying zoning district?
- Can they be considered utilities?
- What are the limitations or restrictions on rooftop mounting?
- Is it necessary to change Part 15 to include small cell facilities?
- Are additional criteria or standards required for small cell facilities?

Small cell antennas and the associated equipment can be defined as a wireless communication facility, according to the definitions contained in Part 15.

When a small cell is constructed in conjunction with a new pole, it can be considered a wireless communication tower.

Antenna means a device used to receive or transmit radio frequency signals. Examples include, but are not limited to, whip antennas, panel antennas and dish antennas.

Wireless communications facility means any equipment or facility used to provide service and may include, but is not limited to, antennae, towers, equipment enclosures, cabling, antenna brackets, and other such equipment. Placing a wireless communications facility on an existing structure does not cause the existing structure to become a wireless communications facility.

Wireless communication tower means any structure designed and constructed for the purpose of supporting one or more communication antennas, including camouflaged towers, conventional wireless towers and low impact/stealth towers. This term does not include broadcast towers, amateur radio towers or those towers used solely for private-use dispatch purposes.

Pursuant to Section 656.1509, the Tower Review Committee (TRC) has the authority to determine if a proposed antenna qualifies as either a camouflaged or low impact/stealth antenna. The TRC will need to review examples of proposed small cell antennas to make that determination what are appropriate designs. Once that determination is made, then the small cell antennas are subject to either Sections 656.1505 as a camouflaged antenna (Track I) or Section 656.1506 as a low impact/stealth antenna (Track II).

According to the definition of an antenna in Part 15, small cell antennas would fall under Section 656.1510. Small cells may be collocated on an existing tower (656.1510 (a)), may be administratively approved if the antenna does not increase the height of a structure by more than 15 feet (656.1510 (b)) or may be approved by the Planning Commission if the antenna does not increase the height of the structure by more than 25 feet (656.1510 (c)).

Section 656.1510 (b) does not allow small cell antennas to be administratively approved if the antenna is on a historic building, structure, site or district. In these cases, the antenna must be approved through a public hearing.

While it is not necessary to change the Zoning Code as small cell antennas are regulated under the different sections of Part 15, it would be advantageous to establish a new small cell antenna section due to their unique designs and requirements.

The assumption is the Tower Review Committee will determine most small cell designs as a camouflaged design. Small cells would be allowed as Track I tower subject to 656.1505 and Track II tower subject to 656.1506.

Currently Track I towers, which are administratively approved, are not allowed in residential zoning districts. At the time the ordinance was enacted, small cell antennas were not either invented or commonly used. A small cell design may be more appropriate in residential areas than conventional wireless antennas due to its smaller overall size and lower height.

Small cell antennas are allowed on Track II towers and as such must comply with the following in Part 15 of the Zoning Code:

- There is no height limit for small cell towers.
- Small cell towers must be setback at least 100% of the tower height from a single-family dwelling or single-family zoning district.
- Small cell towers must be setback at least 50 feet from a transportation view corridor or environmentally sensitive lands.
- The ground equipment is required to be screened with a 10 foot wide landscape area and 8 foot high chain link or wood fence. Section 656.1512 (b)(c).

It appears the ground equipment for small cell antennas is significantly smaller than for conventional wireless antennas. Requiring a fence and landscape may make the equipment more visually noticeable. Section 656.1512 should be reviewed to determine if the screening and landscaping requirements are excessive for this type of antenna.

If a separate section for small cell antennas is considered, the Tower Review Committee will need to evaluate the criteria and restrictions below for small cell antennas.

- Are there specific small cell designs, which should be approved or disapproved?
- Shroud must cover antennas, equipment and cabling, and painted to match pole
- Shroud must be in line with pole, taper and connect flush with pole
- Location on side of pole unacceptable.
- Shroud shall not extend more than ___ feet above top of existing pole.
- Shroud shall not exceed ___ feet in width or ___ % of the pole diameter.
- Should small cells be allowed in residential areas?
- What is the maximum height of a pole
- What is the minimum spacing between poles?
- Can the height vary depending on the zoning district?
- Do new small cells require the public to be notified or can they be administratively approved?
- What type of screening and or landscape is appropriate for small cell antennas?